



CMMI Institute

PUBLIC SECTOR – POWER PACK

TRANSFORMING THE DELIVERY OF PUBLIC
SECTOR TECHNOLOGY SOLUTIONS

NAME: Kiran Honavalli

TITLE: Senior Manager

ORGANIZATION: Deloitte Consulting LLP

Place YOUR LOGO here

**CAPABILITY
COUNTS 2017**
CMMIINSTITUTE.COM/CONFERENCES

Content

- Common challenges in Public Sector industry projects
- Public Sector Power Pack
- Fitment in the existing CMMI ecosystem
- Approach to adopting Power Pack
- Power Pack Footprint on Technology Solutions

Common challenges in Public Sector industry projects



Majority of PS projects are large, fixed price, complex custom development jobs



Right level of stakeholder involvement (including third party vendors) throughout the project lifecycle



Traditional project estimation vs transfer solution estimation



Selection of right methodology – Water Fall vs Agile vs hybrid agile



Due to the long procurement timeframes, the RFP requirements and contracts are often dated by the time the project starts



Scope creep after requirements are baselined



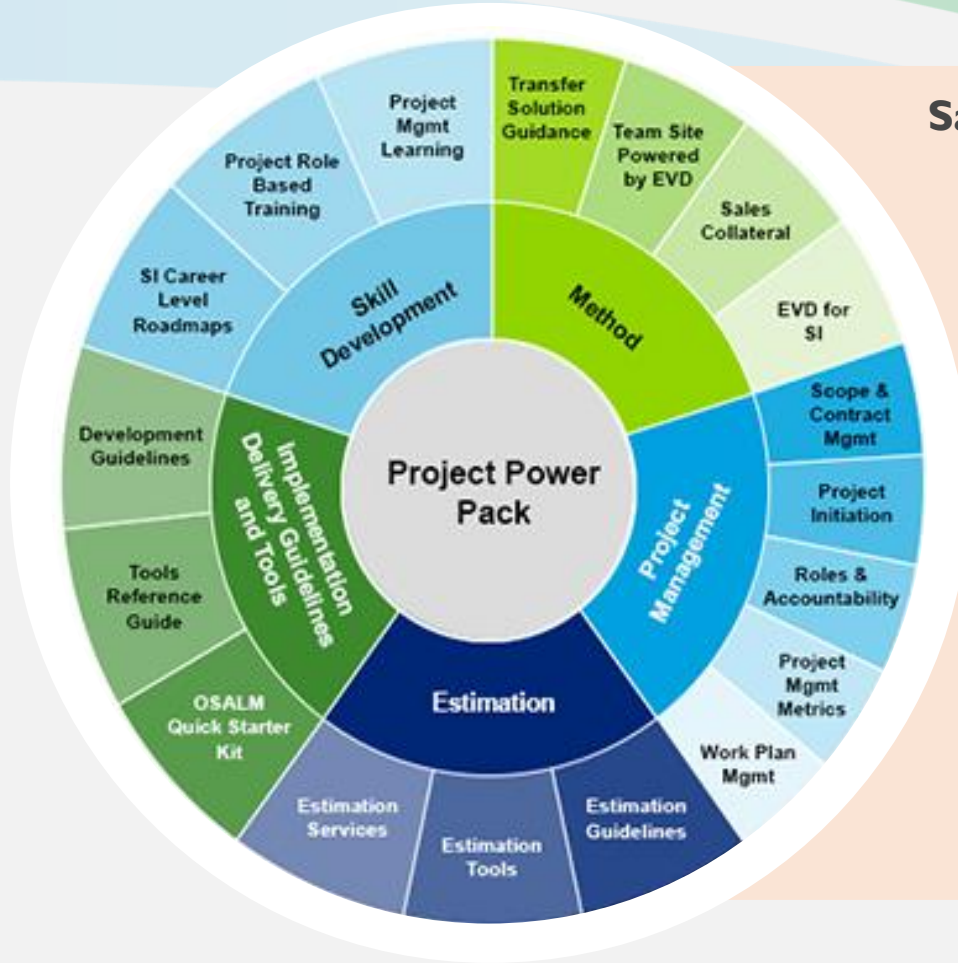
Government transparency obligations can increase public scrutiny



Client is unable to uphold their obligations to meet the schedule

Public Sector Power Pack

The Project Power Pack is a comprehensive navigable guide for effectively jumpstarting and delivering Public Sector engagements with a focus on reusability.

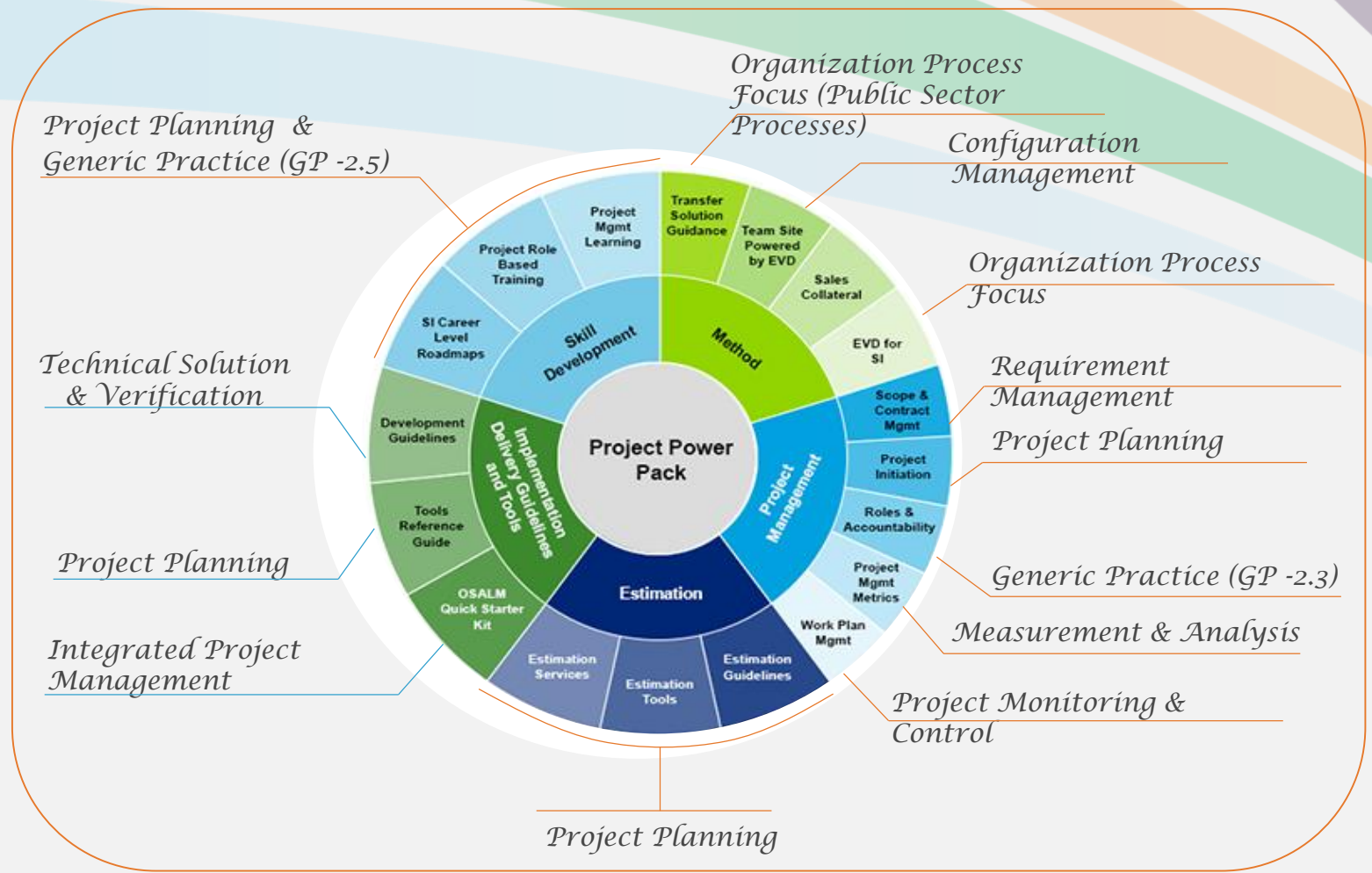


Salient Feature of Public Sector Power Pack

- Alignment with the core components of IT service delivery
- Transfer Solution Estimation Guidelines
- Specific content related to fit-gaps, requirements, process modelling
- Collateral materials to support Hybrid Agile delivery
- Quick Reference Guides to help improve code quality
- Role/Career focused learning guidelines
- Tools Reference Guide - one-stop-shop for relevant tool set
- Build on top of existing Quality Management System

Fitment in the existing CMMI ecosystem

Public Sector processes are defined in alignment with CMMI-ML3 processes and are built on top Deloitte's QMS framework, and is a key accelerator for effective Public Sector project execution.



Approach to adopting Power Pack

Assess impact

- Analysis of method impact
- Analysis of tools impact

Train Team Members

- Train project leads

Evaluate AS-IS State

- Analyze AS-IS state of projects w.r.t PS IT enhancement

Implementation Strategy

- Update QV and DCR framework
- Coach Projects
- Perform QV and DCR
- Prioritize action plan
- Institutionalize adoption

Reduce Project Risks

Increase Transparency

Enhance Deliverable Quality

Effective Team Collaboration

Key Deliverable:
Impact Analysis Report



Key Deliverable:

- Training material
- Coaching Guideline



Key Deliverable:

- Project AS-IS Analysis Report
- Action Plan



Key Deliverable:

- Assessment Result
- Delivery Center Rollout Approach
- Updated QV/DCR Framework

Power Pack Footprint on Technology Solutions

- Project team revisited the existing code review and unit testing documents in place to enhance with PS Power Pack recommended leading practices; also the rules in the automated review tool such as “FindBug” were reviewed for enhancement
- The implementation of these practices has minimized the leakage of defects (by 42 to 50% from previous release) and has enhanced the deliverable quality
- Post-production issues were reduced by 60% by identifying the issues early in the project lifecycle
- Role/Carrier-based trainings rolled out to practitioners
- Improved estimation tool

As used in this document, “Deloitte” means Deloitte Consulting LLP, a subsidiary of Deloitte LLP. Please see www.deloitte.com/us/about for a detailed description of our legal structure. Certain services may not be available to attest clients under the rules and regulations of public accounting.

This communication contains general information only, and none of Deloitte Touche Tohmatsu Limited, its member firms, or their related entities (collectively, the “Deloitte Network”) is, by means of this communication, rendering professional advice or services. Before making any decision or taking any action that may affect your finances or your business, you should consult a qualified professional adviser. No entity in the Deloitte Network shall be responsible for any loss whatsoever sustained by any person who relies on this communication.

Copyright © 2017 Deloitte Development LLC. All rights reserved.



**CAPABILITY
COUNTS 2017**
CMMIINSTITUTE.COM/CONFERENCES